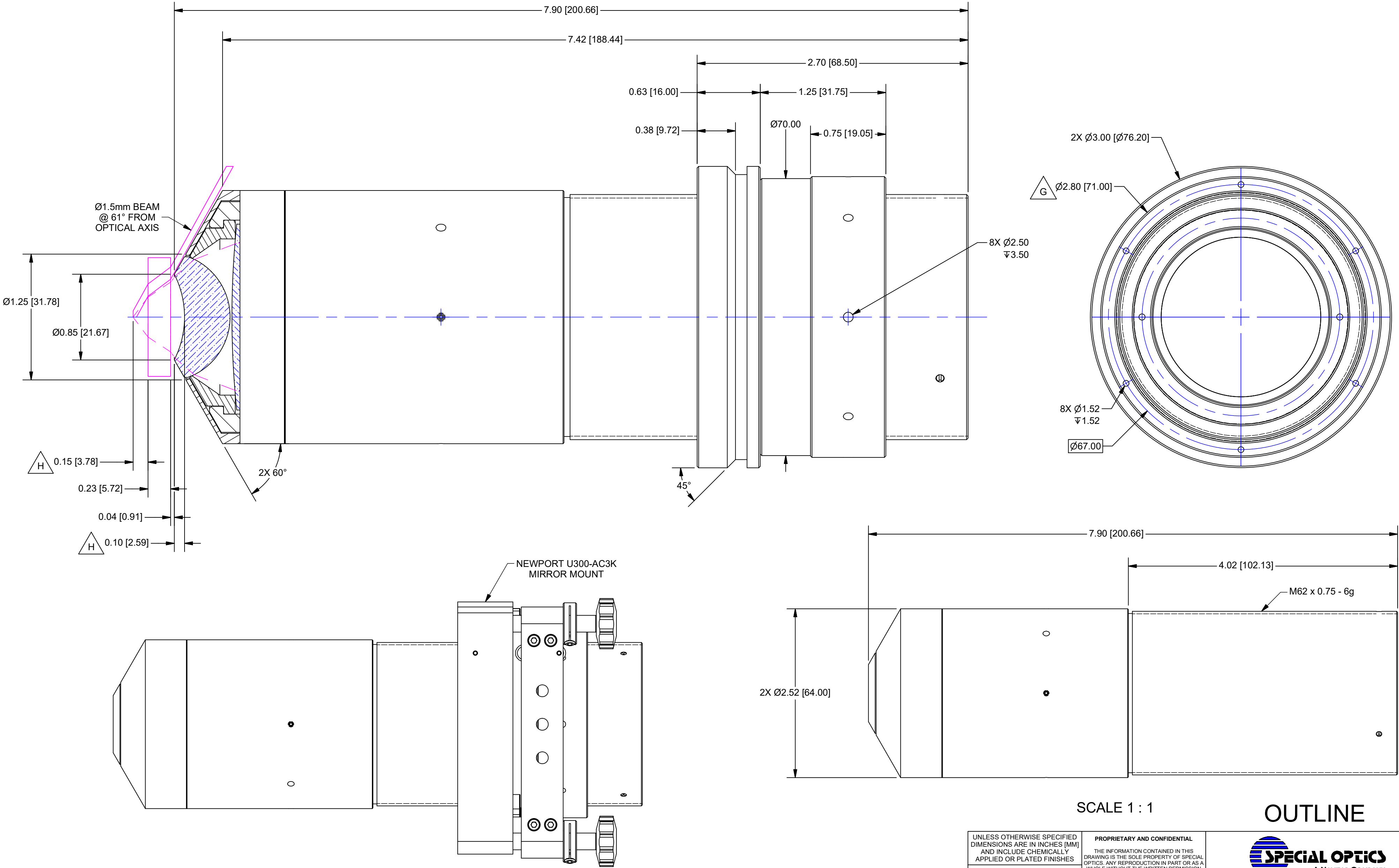


- NOTES:
- 1. SHOULDERS PERPENDICULAR TO OPTIC AXIS
 - 2. REMOVE ACTIVE ALIGNMENT SET SCREWS AFTER RTV CURES
 - 3. GRAVITY PARALLEL TO OPTIC AXIS


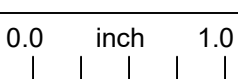
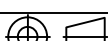
REVISION HISTORY				
REV	DESCRIPTION	DATE	DR BY	CH BY
E	REVISED MOUNT	8/6/2015	CJR	
F	INCREASED LENGTH, ADDED M62 THREAD, REVISED MOUNT	10/5/2015	CJR	
G	CH'D DIA. (WAS Ø76.2mm)	10/16/2015	CJR	JO
H	CORRECTED FOCAL POINT DIMENSION	1/10/2019	CJR	JO



LOWER POSITION
SCALE 1 : 1

SCALE 1 : 1

OUTLINE

UNLESS OTHERWISE SPECIFIED DIMENSIONS ARE IN INCHES (MM) AND INCLUDE CHEMICALLY APPLIED OR PLATED FINISHES		PROPRIETARY AND CONFIDENTIAL THE INFORMATION CONTAINED IN THIS DRAWING IS THE SOLE PROPERTY OF SPECIAL OPTICS. ANY REPRODUCTION IN PART OR AS A WHOLE WITHOUT THE WRITTEN PERMISSION OF SPECIAL OPTICS IS PROHIBITED.		 SPECIAL OPTICS A NAVITAR COMPANY	
SCALE:	1.5:1			ASSEMBLY 54-40-25 @ 532-1064nm	
WEIGHT:	1066.00 g	DO NOT SCALE DRAWING 		SIZE C	PART NUMBER 1-25874
DR BY:	CJR				
CH BY:	JO			REV H	
PROJECT #:	E4047				
DATE DR:	6/25/2015				