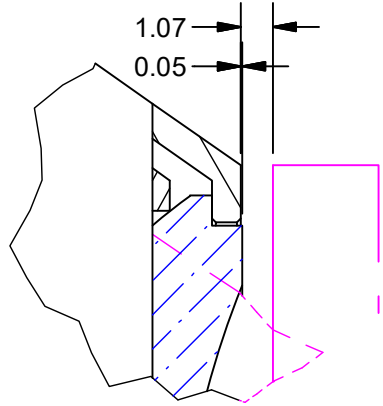
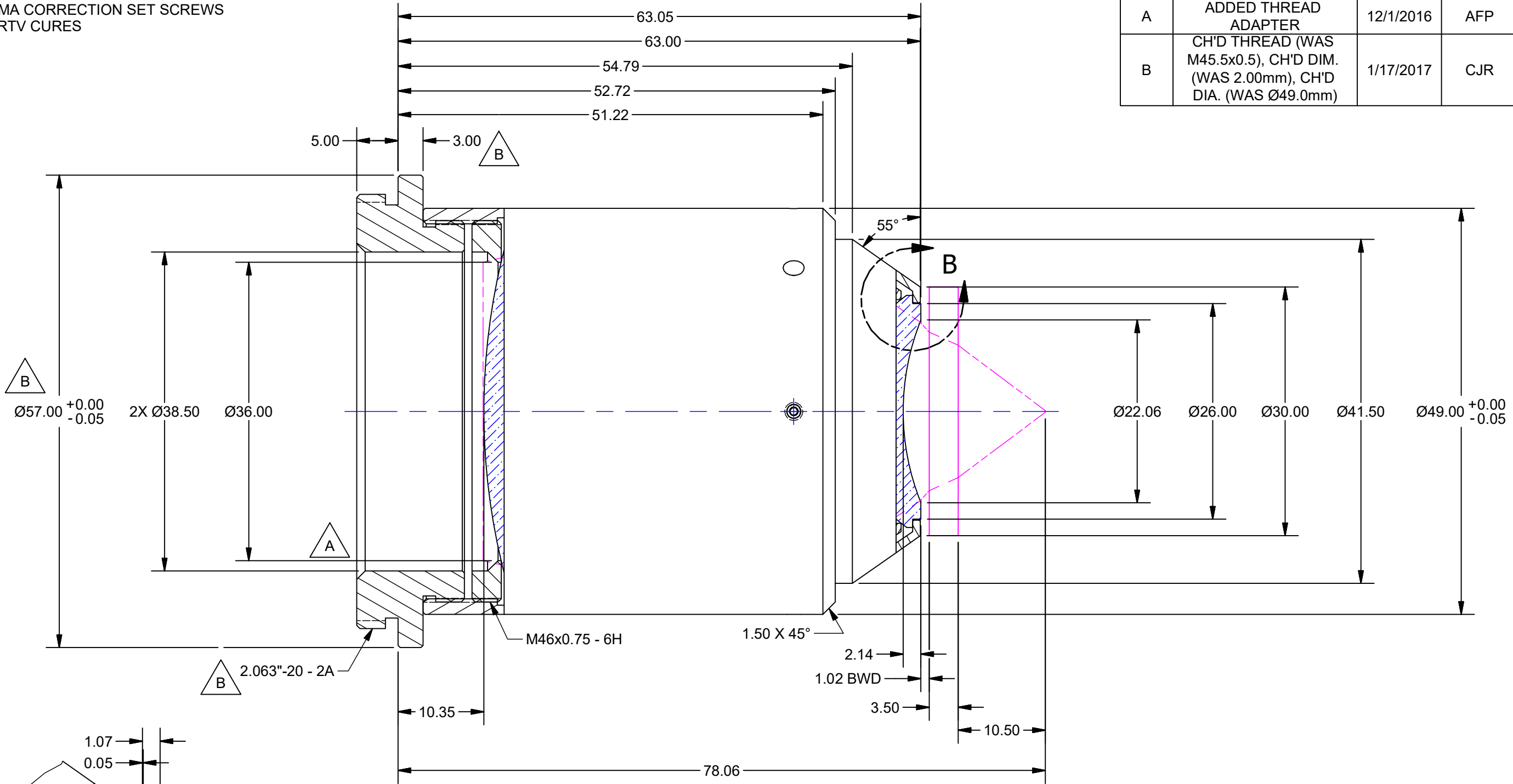


NOTES:

1. REMOVE COMA CORRECTION SET SCREWS
AFTER 3112 RTV CURES


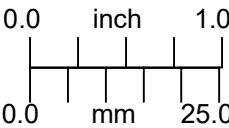
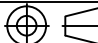
REVISION HISTORY				
REV	DESCRIPTION	DATE	DR BY	CH BY
-	PROTOTYPE	11/22/2016	AFP	JO
A	ADDED THREAD ADAPTER	12/1/2016	AFP	JO
B	CH'D THREAD (WAS M45.5x0.5), CH'D DIM. (WAS 2.00mm), CH'D DIA. (WAS Ø49.0mm)	1/17/2017	CJR	JO



DETAIL B
SCALE 4 : 1

Preliminary Drawing:
Drawing to be used for
Prototype and Quote
purposes ONLY

OUTLINE

UNLESS OTHERWISE SPECIFIED DIMENSIONS ARE IN MILLIMETERS AND INCLUDE CHEMICALLY APPLIED OR PLATED FINISHES		PROPRIETARY AND CONFIDENTIAL THE INFORMATION CONTAINED IN THIS DRAWING IS THE SOLE PROPERTY OF SPECIAL OPTICS. ANY REPRODUCTION IN PART OR AS A WHOLE WITHOUT THE WRITTEN PERMISSION OF SPECIAL OPTICS IS PROHIBITED.				
SCALE:	2:1			ASSEMBLY 54-36.5-30 @ 780-1064nm		
WEIGHT:	269.89 g					
DR BY:	CJR					
CH BY:	JO	DO NOT SCALE DRAWING 		SIZE	PART NUMBER	REV
PROJECT #:	E4086			B	1-27001	B
DATE DR:	12/2/2016					