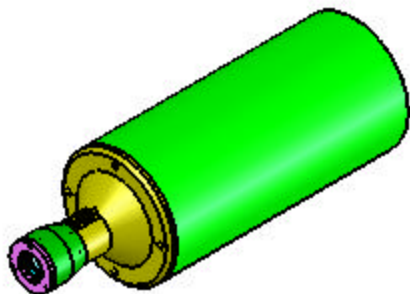
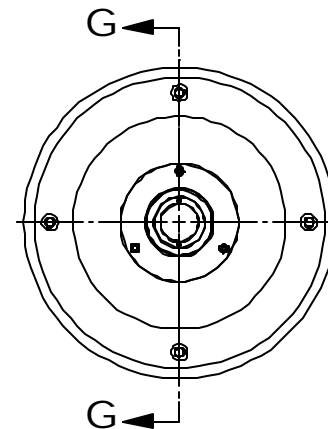
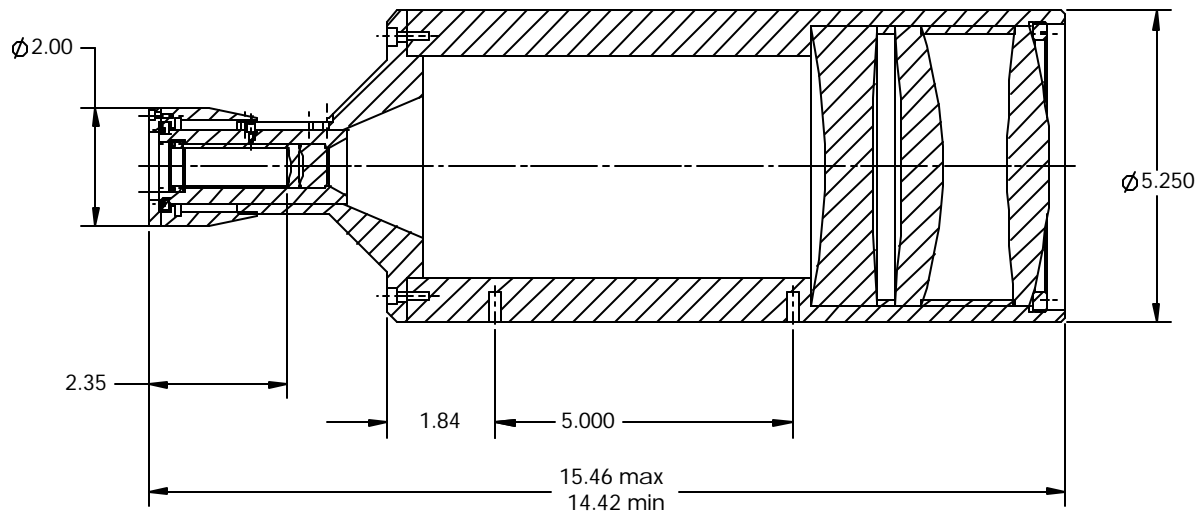


REVISIONS				
ECO	REV.	DESCRIPTION	DATE	APPROVED
	A	ORIGINAL SPECIAL OPTICS RELEASE	02/21/06	



SECTION G-G
SCALE 1 : 2

UNLESS SPECIFIED
ALL DIMENSIONS APPLY AFTER FINISH
REMOVE ALL BURRS AND SHARP EDGES (.010 MAX. R. OR CHAMFER)
MIN. BEND RADIUS, MIN. BEND RELIEF.
NO TOOL MARKS.
MACHINE FINISH \checkmark EXCEPT \checkmark FOR HORIZONTAL MILLING.

PROPRIETARY AND CONFIDENTIAL
THE INFORMATION CONTAINED IN THIS
DRAWING IS THE SOLE PROPERTY OF
SPECIAL OPTICS. ANY REPRODUCTION
IN PART OR AS A WHOLE
WITHOUT THE WRITTEN PERMISSION OF
SPECIAL OPTICS IS PROHIBITED.

		UNLESS OTHERWISE SPECIFIED:	NAME	DATE	SPECIAL OPTICS Manufacture and Design 50-100-10x BEAM EXPANDER OUTLINE DRAWING			
		DIMENSIONS ARE IN INCHES	DRAWN	L. R.				02/21/06
		TOLERANCES:	CHECKED					
		FRACTIONAL $\pm 1/64$	ENG APPR.					
		ANGULAR: MACH $\pm 30'$	MFG APPR.					
		ONE PLACE DECIMAL $\pm .03$	Q. A.					
		TWO PLACE DECIMAL $\pm .010$	COMMENTS: CAD FILE 13716-01M					
		THREE PLACE DECIMAL $\pm .005$						
		INTERPRET GEOMETRIC TOLERANCING PER LATEST ANSI Y14.5 SPEC.						
		MATERIAL: ALUMINUM ALLOY 6061-T6						
13716		FINISH	BLACK ANODIZE			SIZE	DWG. NO.	REV
NEXT ASSY	USED ON					B	13771-000	A
APPLICATION		DO NOT SCALE DRAWING				SCALE: 1:1	WEIGHT:	SHEET 1 OF 1