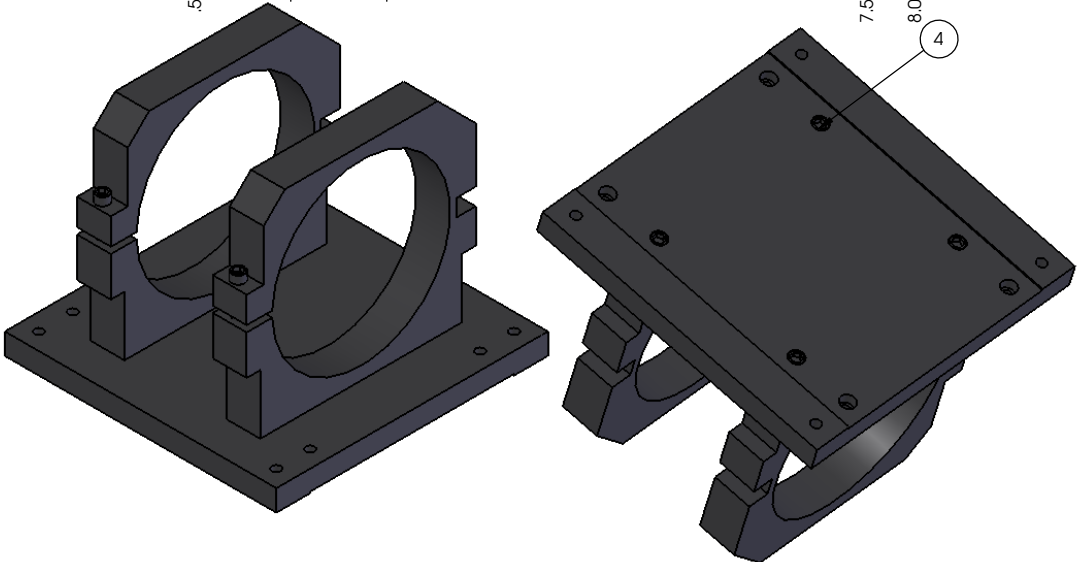
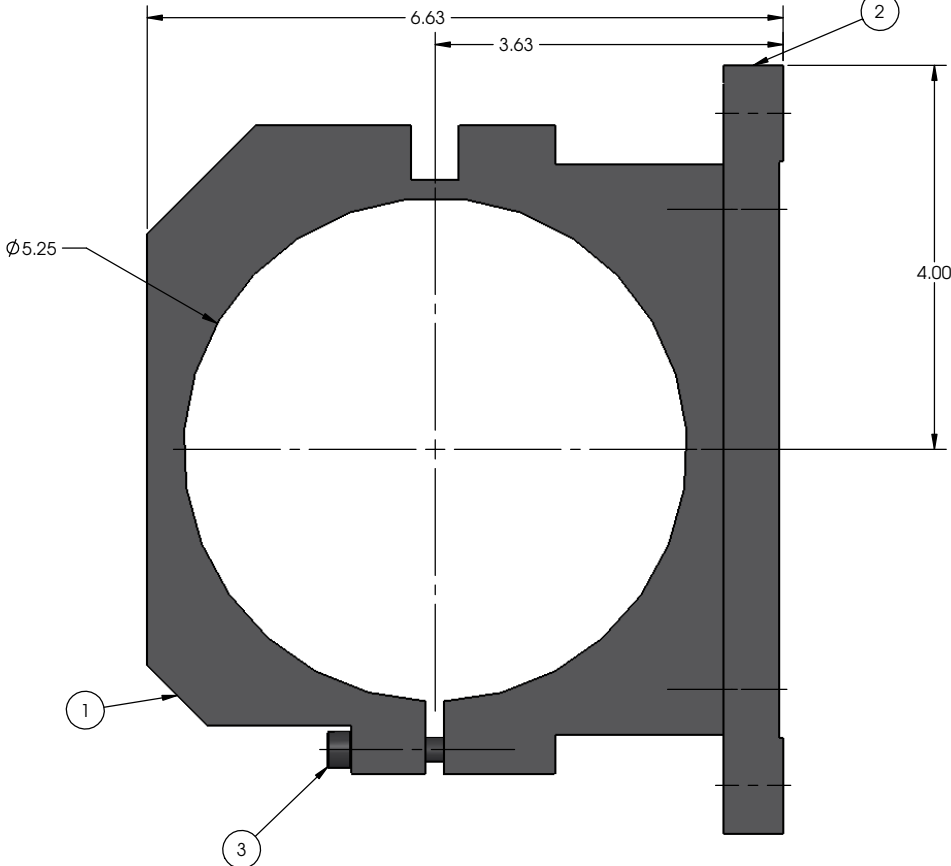
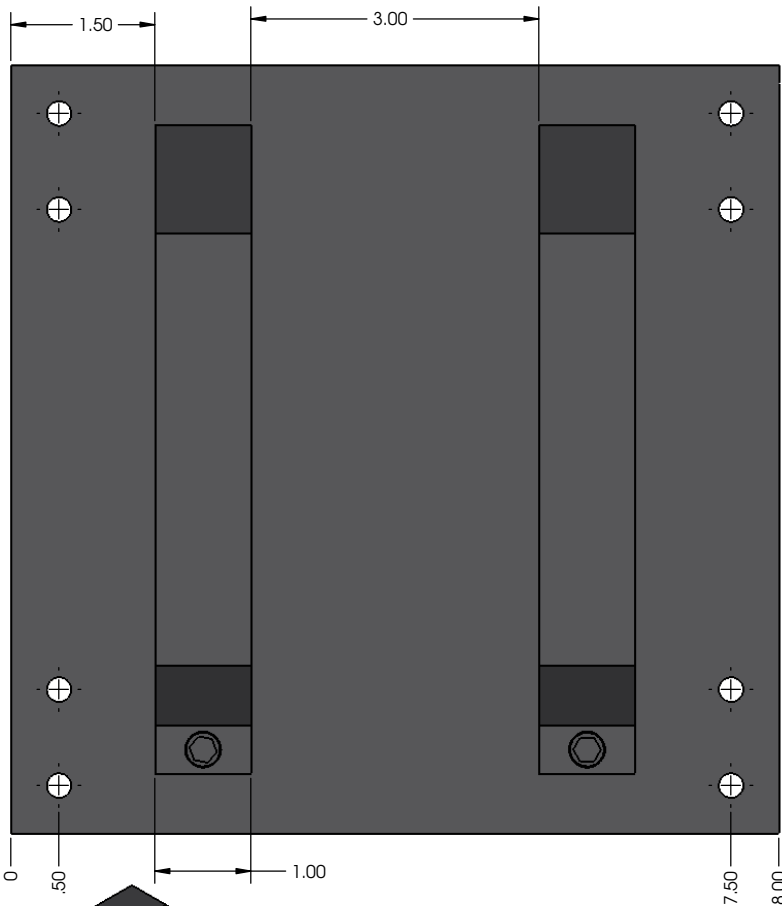


REVISIONS				
ZONE	REV.	DESCRIPTION	DATE	APPROVED
	A	REVISED TITLE BLOCK	9/16/2015	



THIS MOUNT BRACKET CAN BE USED WITH 50-100 SERIES BEAM EXPANDER

ITEM NO.	PART NUMBER	DESCRIPTION	QTY.
1	13853-01	BX MOUNT	2
2	13853-02	BX MOUNT BASE	1
3	13853-03	1/4-20 x 1.5" LG SHCS	2
4	13853-04	1/4-20 x .75 LG SHCS	4

PROPRIETARY AND CONFIDENTIAL

THE INFORMATION CONTAINED IN THIS DRAWING IS THE SOLE PROPERTY OF SPECIAL OPTICS. ANY REPRODUCTION IN PART OR AS A WHOLE WITHOUT THE WRITTEN PERMISSION OF SPECIAL OPTICS IS PROHIBITED.

ALL THREAD UNDERCUT SHALL BE A WIDTH OF 1.5 TIMES THE THREAD PITCH UNLESS OTHERWISE SPECIFIED.	UNLESS OTHERWISE SPECIFIED: DIMENSIONS ARE IN INCHES TOLERANCES: ANGULAR: MACH ±1 DEG. TWO PLACE DECIMAL ±.05 THREE PLACE DECIMAL ±.003 FOUR PLACE DECIMAL ±.0005	DRAWN BY L.R.	NAME DATE
MAX. SURF. ROUGHNESS $\sqrt{16}$	INTERPRET GEOMETRIC TOLERANCING PER ASME Y14.5M, 1994	CHECKED	06/18/2007
CHAMFER ALL THREADS 30° TO ROOT DIAMETER	MATERIAL: ALUMINUM 6061-T6	ENG APPR.	
13853	FINISH: BLACK ANODIZE	MFG APPR.	
NEXT ASSY	USED ON	Q.A. APPR.	
APPLICATION	DO NOT SCALE DRAWING	COMMENTS	THIRD ANGLE PROJECTION

SPECIAL OPTICS
Special Optics Inc.
315 Richard Mine Rd.
Wharton, NJ 07885

TITLE:
**BEAM EXPANDER 50-100 SERIES
MOUNT BRACKET**

SIZE
C

SCALE: 1:2 | WEIGHT: 6.61 | SHEET 1 OF 1

REV
A