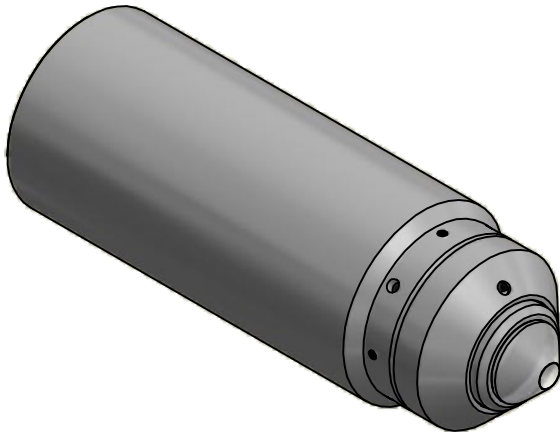
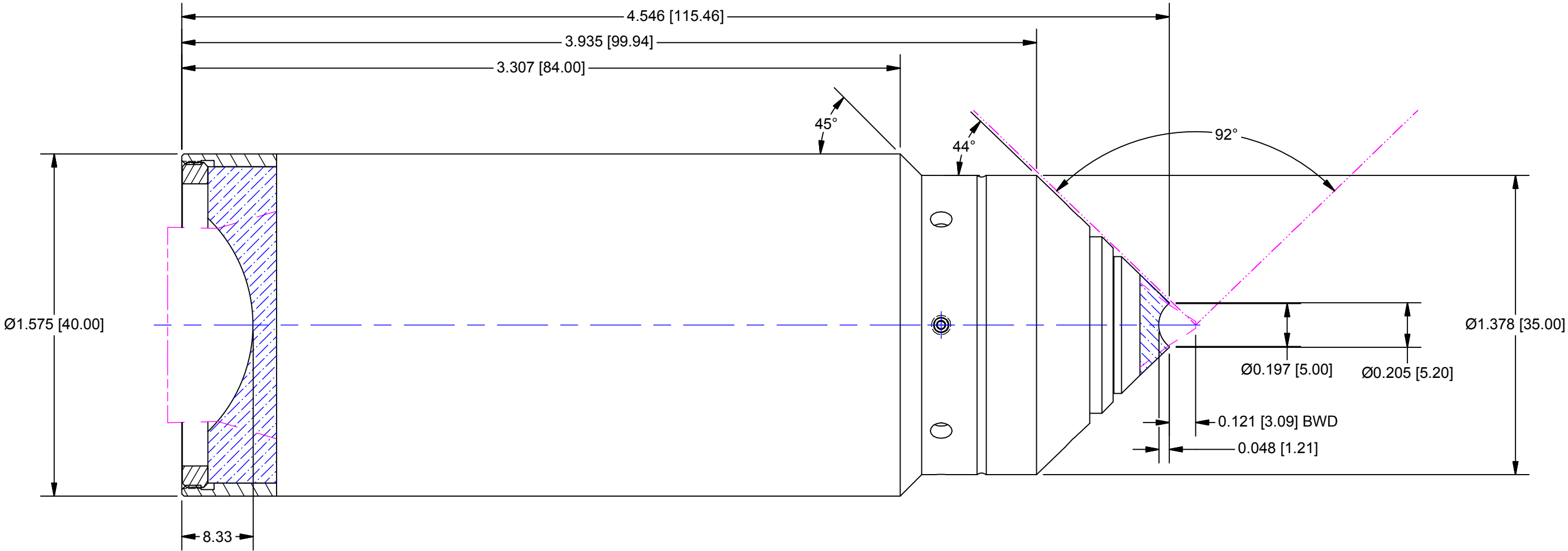

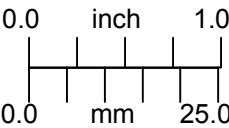



REVISION HISTORY				
REV	DESCRIPTION	DATE	DR BY	CH BY
-	PROTOTYPE	4/01/2014	AFP	JO
A	ADDED MORE INFO	4/03/2014	AFP	JO
B	REDUCED WEIGHT PER CUST. REQUEST, WAS 681 g	4/04/2014	AFP	JO
C	REDUCED HOUSING DIA. (WAS 41.0) & ADDED STEP; REMOVED THREADED ADAPTER	4/15/2014	AFP	JO
D	ADDED SEALANT CALLOUT	4/2/2014	criley	JO
E	ADDED BACK WORKING DISTANCE	05/30/2014	criley	JO
F	REMOVED SPACER 3-24477 FROM ASSEMBLY	01/15/2015	criley	JO



OUTLINE

UNLESS OTHERWISE SPECIFIED DIMENSIONS ARE IN INCHES [MM] AND INCLUDE CHEMICALLY APPLIED OR PLATED FINISHES		PROPRIETARY AND CONFIDENTIAL THE INFORMATION CONTAINED IN THIS DRAWING IS THE SOLE PROPERTY OF SPECIAL OPTICS. ANY REPRODUCTION IN PART OR AS A WHOLE WITHOUT THE WRITTEN PERMISSION OF SPECIAL OPTICS IS PROHIBITED.		 SPECIAL OPTICS A NAVITAR COMPANY	
SCALE:	2:1			ASSEMBLY (54-23-15 @ 435-950nm)	
WEIGHT:	461.64 g				
DR BY:	criley				
CH BY:	JO	DO NOT SCALE DRAWING		SIZE B	1-24409 SHEET 3 OF 3
PROJECT #:	E4015				
DATE DR:	4/2/2014				REV F