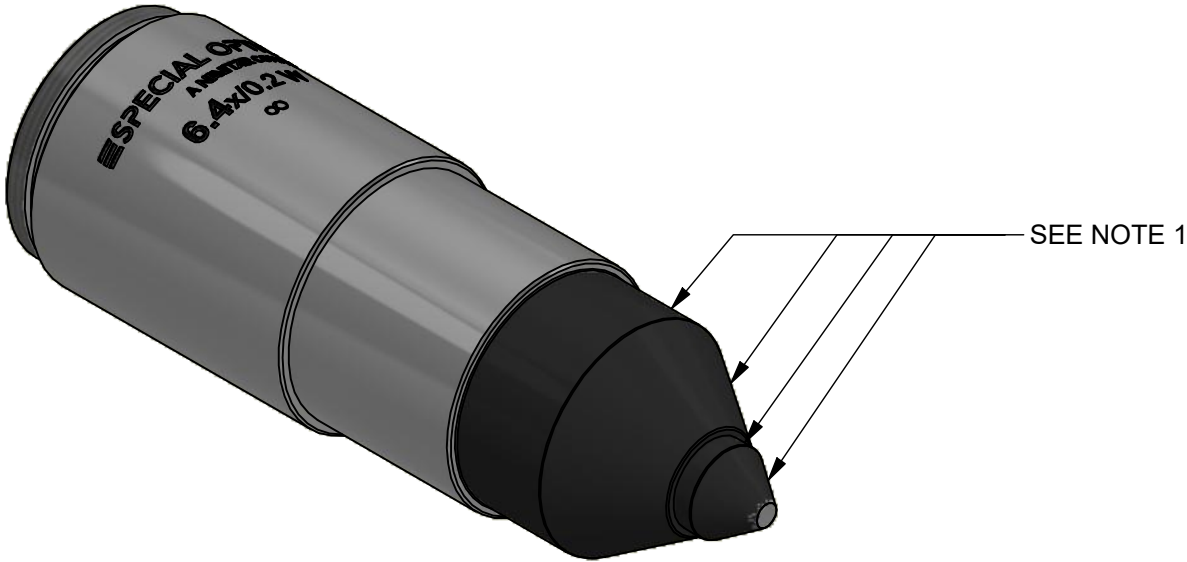
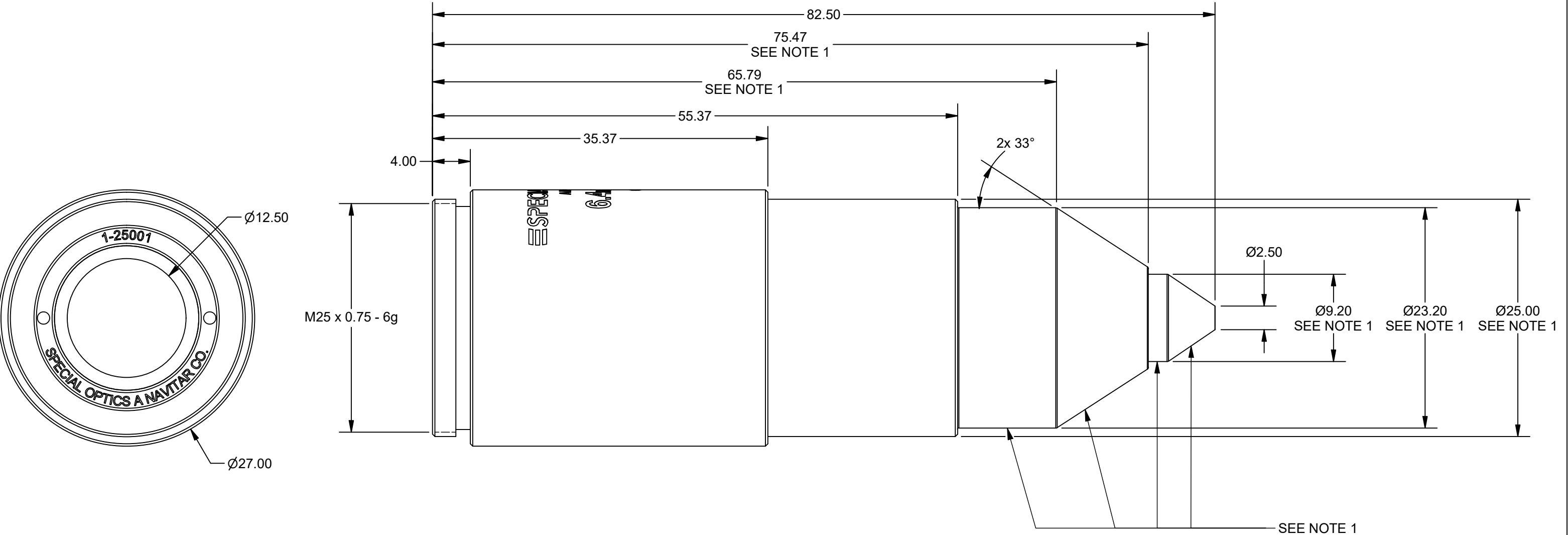



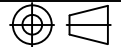

NOTES:

1. INDICATED SURFACES WILL BE SEALED WITH A POLYURETHANE COATING. DUE TO THE NATURE OF THE COATING ITS THICKNESS WILL VARY BY APPROXIMATELY 0.0mm - 0.1mm OR Ø0.0mm - Ø0.2mm IN DIAMETER.

| REVISION HISTORY |  |           |       |       |
|------------------|--|-----------|-------|-------|
| REV              | DESCRIPTION                              | DATE      | DR BY | CH BY |
| C                | REVISED LAYOUT PER NEW PRESCRIPTION      | 11/4/2014 | CJR   | JO    |
| D                | REVISED LAYOUT PER NEW PRESCRIPTION      | 2/18/2015 | CJR   | JO    |
| E                | REVISED NOTES AND ADDED COATING TO MODEL | 5/27/2020 | CJR   | JO    |



# OUTLINE

|  |   |  |             |     |
|--|---|--|-------------|-----|
| UNLESS OTHERWISE SPECIFIED DIMENSIONS ARE IN MILLIMETERS AND INCLUDE CHEMICALLY APPLIED OR PLATED FINISHES |   | PROPRIETARY AND CONFIDENTIAL<br>THE INFORMATION CONTAINED IN THIS DRAWING IS THE SOLE PROPERTY OF NAVITAR. ANY REPRODUCTION IN PART OR AS A WHOLE WITHOUT THE WRITTEN PERMISSION OF NAVITAR IS PROHIBITED. |             |     |
| SCALE:   | 5:2   |   |             |     |
| WEIGHT:  | 214.51 g  |  |             |     |
| DR BY:   | CJR   |  |             |     |
| CH BY:   | JO  |  |             |     |
| PROJECT #:   | E4027   |  |             |     |
| DATE DR:   | 11/3/2014   | ASSEMBLY<br>54-12.5-31 @ 450-1000nm  |             |     |
| DO NOT SCALE DRAWING   |   |  |             |     |
|                       |  | SIZE   | PART NUMBER | REV |
|  | SHEET 2 OF 2  | B  | 1-25001     | E   |