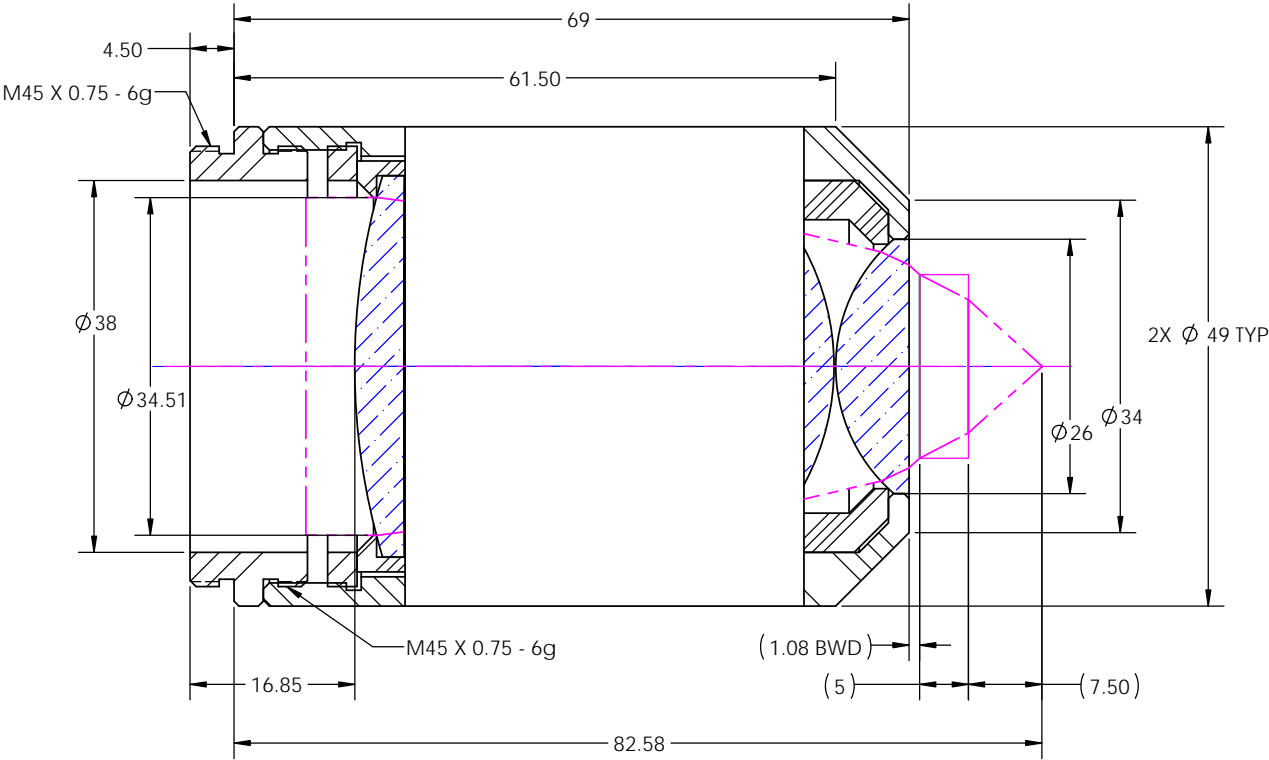

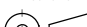


ALL MECHANICALS PARTS: ULTEM 2300 PEI-30  
FINISH: NATURAL

REVISIONS				
ZONE	REV.	DESCRIPTION	DATE	APPROVED
	0	PROTOTYPE	08/27/2018	



OUTLINE

INTERPRET GEOMETRIC TOLERANCING PER LATEST ANSI Y14.5 SPEC.		UNLESS OTHERWISE SPECIFIED:		NAME	DATE	<div> SPECIAL OPTICS * Special Optics Inc. A NIKITAR COMPANY 3 Stewart Court Denville, NJ 07834</div>				
<div>PROPRIETARY AND CONFIDENTIAL</div> <div>THE INFORMATION CONTAINED IN THIS DRAWING IS THE SOLE PROPERTY OF SPECIAL OPTICS. ANY REPRODUCTION IN PART OR AS A WHOLE WITHOUT THE WRITTEN PERMISSION OF SPECIAL OPTICS IS PROHIBITED.</div>		<div>DIMENSIONS ARE IN mm</div> <div>TOLERANCES</div> <div>LINEAR X: ±.5 X: ±.25 XX: ±.13</div> <div>ANGULAR: X° -1.25° X° -1.05° XXX° -1.005°</div>		DRAWN	AFP	08/27/2018	<div>TITLE:</div> <div>ASSEMBLY</div> <div>54-35-26 @ 461-698nm</div>			
				CHECKED	XXX	XXX		<div>SIZE</div> <div>B</div>		
				ENG APPR.					<div>DWG. NO.</div> <div>1-28830</div>	
				MFG APPR.						<div>REV</div> <div>-</div>
				Q.A.						
1-28830		MATERIAL AS NOTED		<div>THIRD ANGLE PROJECTION</div> <div></div>		<div>WEIGHT:</div>	<div>SHEET 1 OF 1</div>			
NEXT ASSY		FINISH AS NOTED								
APPLICATION		DO NOT SCALE DRAWING				CAD PART NO. 28830				