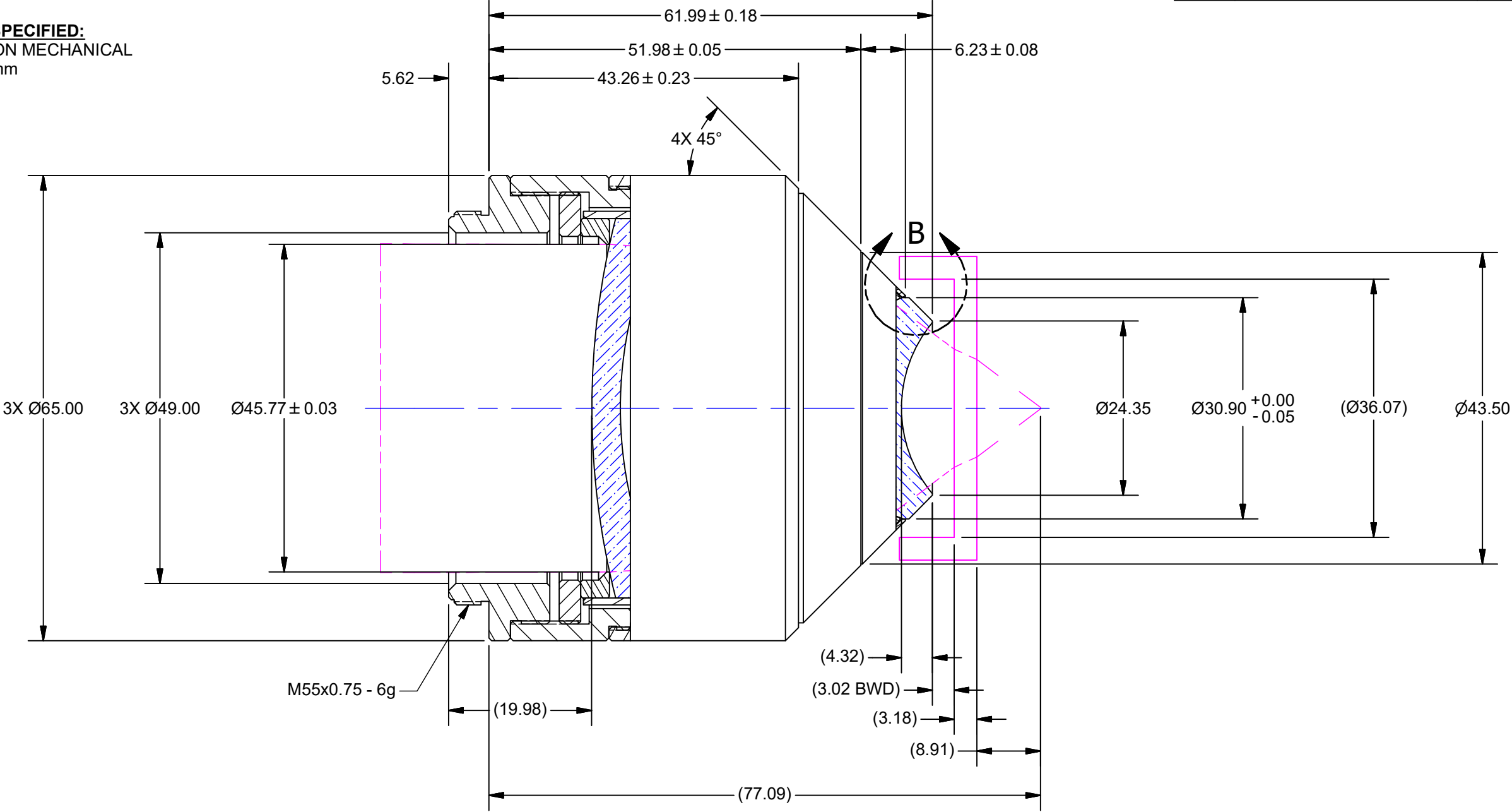


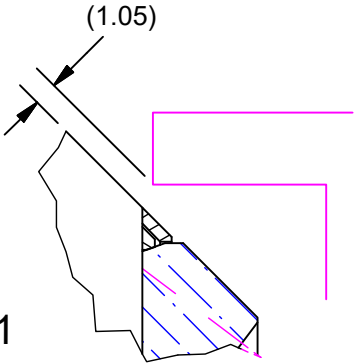
NOTES:

1. HOUSING AND SPACER MATERIAL TYPE AND FINISH:
MATERIAL: ULTEM 2300 PEI-30
FINISH: NATURAL
2. UNLESS OTHERWISE SPECIFIED:
A) ALL DIMENSIONS ON MECHANICAL
PARTS ARE ± 0.13mm

REVISION HISTORY				
REV	DESCRIPTION	DATE	DR BY	CH BY
-	PROTOTYPE	11/17/2017	CJR	
A	ADDED NOTE 2, ADDED TOLERANCES	12/1/2017	CJR	


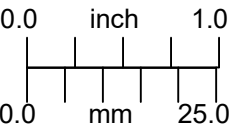
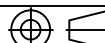


DETAIL B
SCALE 3 : 1



Preliminary Drawing:
Drawing to be used for
Prototype and Quote
purposes ONLY

OUTLINE

UNLESS OTHERWISE SPECIFIED DIMENSIONS ARE IN MILLIMETERS AND INCLUDE CHEMICALLY APPLIED OR PLATED FINISHES		PROPRIETARY AND CONFIDENTIAL THE INFORMATION CONTAINED IN THIS DRAWING IS THE SOLE PROPERTY OF SPECIAL OPTICS. ANY REPRODUCTION IN PART OR AS A WHOLE WITHOUT THE WRITTEN PERMISSION OF SPECIAL OPTICS IS PROHIBITED.				
SCALE:	1.5:1			ASSEMBLY 54-46-38 @ 319-323, 780, 852, & 1064nm		
WEIGHT:	203.32 g					
DR BY:	CJR					
CH BY:						
PROJECT #:	E4112	DO NOT SCALE DRAWING		SIZE	PART NUMBER	REV
DATE DR:	11/17/2017			B	1-28126	A